

# **TREAD PATTERN GUIDE**

## **Staggered Block Tread**

As the standard tread pattern option provided for many factory-direct loaders from manufacturers such as John Deere, Bobcat, Case, Takeuchi, Volvo, New Holland, Mustang, Gehl and others, the staggered block tread is perhaps the most popular and most commonly used tread pattern type worldwide. This tread design is the most general purpose pattern available, though it is particularly well-suited for use on hard and abrasive surfaces such as paved highways and gravel. In general, treads with this pattern will be the most durable and longest-lasting if your work conditions require you to turn frequently on hot paved surfaces while also being generally suitable for use on sand, clay, dirt, mud, gravel and asphalt.



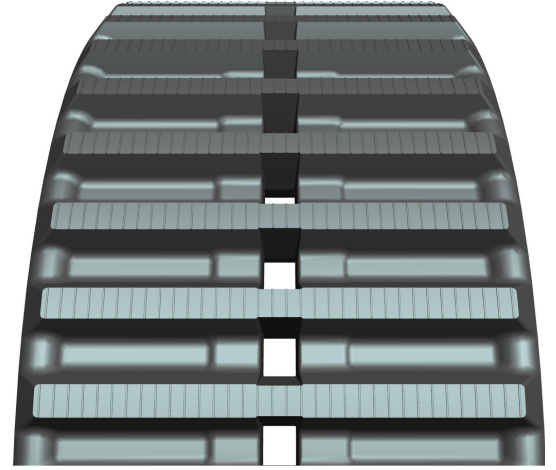
## **Low Impact Tread Pattern**

This tread pattern is available for many track loaders and we will be increasing the availability of this option over time. This tread pattern is commonly referred to as the Turf-Friendly Tread Pattern. This tread pattern offers minimal vibration on the operator with maximum flotation and minimal ground disturbance. This is definitely your choice for a golf course or finished landscape areas.



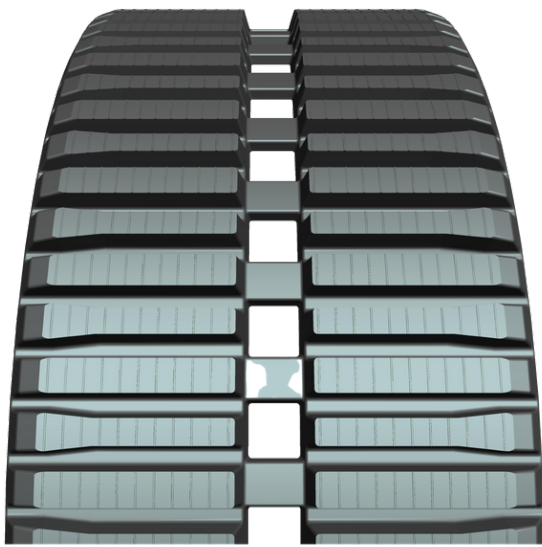
## Straight Bar Tread

Designed to maximise traction, the straight bar tread pattern is specifically made for those who frequently need to operate on wet, muddy or snow terrain. The design of this tread will significantly reduce the risk of getting stuck in the mud as compared to the staggered block or C-lug tread patterns. However, this increased traction does come with some downsides, and straight bar treads provide rougher rides than either staggered block or C-lug treads.



## Multi Bar Tread

While other tread patterns like the staggered block and C-lug treads work well on a variety of surfaces, the multi bar tread pattern is most appropriate when the operator needs to move back and forth between loose ground cover and hard surfaces. This tread design is able to switch quickly between the smooth ride that is desirable on paved surfaces and the increased traction that is needed on loose ground cover. As compared to the straight bar tread design, multi bar treads provide a smoother ride across terrain types. In addition, the multi bar tread design is tremendously popular for use in snow.



## Yanmar Offset tracks

Yanmar have designed their machines to be as narrow as possible while still maintaining stability. The offset centre style of tracks are a big part of this achievement.

Our Yanmar tracks offer a staggered block pattern which is an all round tread pattern for most use cases.



## C-Lug Tread

This tread pattern is very similar in appearance to the staggered block tread; however, the C-lug tread has notches cut out of each block, creating a sideways “C” shape. For those who need to operate their CTL or MTL both on and off-road, the C-lug tread is the mostly flexible across a variety of terrain types. This tread pattern is extremely durable, and its high number of cutting edges allows for increased traction, superior handling and improved performance. Designed to provide a smooth ride over a number of different surfaces, the C-lug tread works well for clay, mud, asphalt, concrete, gravel and sand.



## Zig-Zag Tread Pattern

Primarily for Snow Applications

This is the John Deere and JCB type Zig Zag tread pattern now available for most compact track loaders. This is becoming a popular OEM tread pattern option as it is highly sought after in snow conditions.

The Zig-Zag pattern offers enhanced traction and virtually eliminates slippage both forward and backward, while minimising machine vibration, it has become a natural choice for snow, mud and clay.

## 'T Bar' Traction

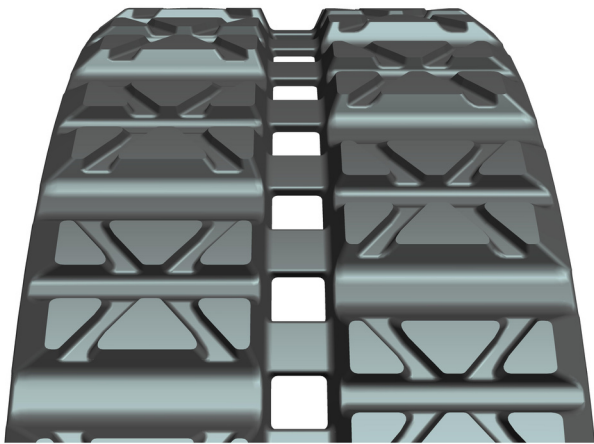
Heavy Duty T shaped Tread

Available mainly in our 300x52.5 and 400x72.5 excavator tracks.in both Wide and Narrow fitments.



## X Pattern Tracks

X Pattern Rubber Tracks deliver superior performance during snow removal. Our enhanced application specific tread pattern provides Improved traction for better operation efficiency, shorter stopping distance on snow covered surfaces and smooth turning ability with less slippage. Also softer ride performance for operator comfort



## ASV Style Tracks

Manufactured to fit a variety of non metal core track machines.

Lightweight track with maximum grip and smooth ride.

